



# Babies by the Bay

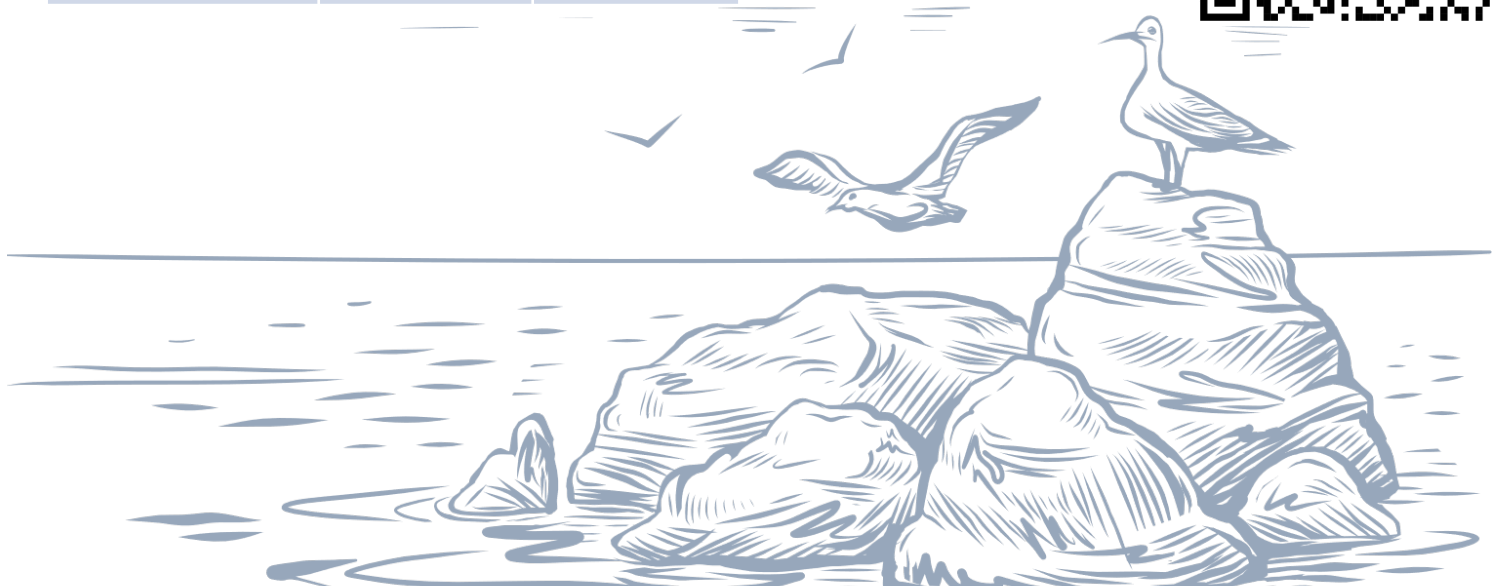
24- 25 July 2025 | Rydges Geelong, Vic

## Program for Thursday 24<sup>th</sup> July

|   |  |
|---|--|
| 12.30 pm  | Registration Opens   |
| 1.00 pm   | Acknowledgement, Welcome and Introductions. <i>Emma Yeomans, Victoria Branch Chair</i>                                       |
| Session 1:<br>Hypoxic-Ischaemic Encephalopathy (HIE): peripartum, intrapartum and the first hours of life | Case Study Introduction. <i>Amanda Whitehouse, Royal Children's Hospital, Melbourne &amp; Vic Branch committee member</i>    |
|   | Brain and HIE Pathophysiology. <i>Helen Patterson, University of Melbourne &amp; Vic Branch committee member</i>             |
|   | Presentation and Diagnosis. <i>Amanda Whitehouse, Royal Children's Hospital, Melbourne &amp; Vic Branch committee member</i> |
|   | Awaiting retrieval – what you need to do! <i>Narelle Wiseman, Cabrini Health</i>   |
| 3.00 pm   | Afternoon Tea and Exhibition   |
| Session 2:<br>HIE: supportive management in the first hours of life                                       | Facilitating neuro-protective care. <i>Erin Church, Mercy Hospital for Women &amp; Vic Branch committee member</i>           |
|   | Protecting the gut and supporting breastmilk feeding. <i>Sharon Perrella, The University of Western Australia</i>            |
|   | Panel Q & A session  |

|                   | ACNN Member Price | Non-Member Price |
|-------------------|-------------------|------------------|
| Thursday (½ day)  | \$55.00           | \$77.00          |
| Friday (full day) | \$104.50          | \$126.50         |
| Both days         | \$159.50          | \$203.50         |

[REGISTER HERE](#) or Scan the QR Code





# Babies by the Bay

24- 25 July 2025 | Rydges Geelong, Vic

## Program for Friday 25<sup>th</sup> July

|           |   |
|-----------|---|
| 8 am      | Registration Open   |
| 8.30 am   | Welcome and Housekeeping. <i>Emma Yeomans, Victoria Branch Chair</i>  |
| Session 1 | PIPER: charting, stabilisation and transfer. <i>Dr Ian Tang</i>   |
|           | Understanding the admission and intensive care experience. <i>Samantha Best, Monash Health</i>                                      |
|           | Preparing the family for their neonatal experience. <i>Samantha Best, Monash Health</i>   |
|           | Emotional and Traumatic Impact on Families. <i>Elise Cowan, Monash Health</i>   |
| 10.00 am  | Morning Tea and Exhibition  |
| Session 2 | Diagnostics and Monitoring – seizure activity, aEEG, MRI. <i>Dr Lupe Alda</i>   |
|           | Pharmacological Management. <i>Megan Clarke, Monash Health</i>  |
|           | Therapeutic Hypothermia and Rewarming Protocols. <i>Samantha Best, Monash Health</i>  |
|           | Panel Q & A session   |
| 12.15 pm  | Lunch and Exhibition  |
| Session 3 | Facilitating developmentally supportive care in the neonatal environment. <i>Kirsty Minter, Grace Centre for Newborn Care</i>       |
|           | What’s in the update? And the Companion Toolkit. Neonatal Standards Version 5 release. <i>Melissah Burnett, ACNN Vice-President</i> |
| 3.00 pm   | Afternoon Tea   |
| Session 4 | Facilitating nutrition, feeding, bonding and early attachment. <i>Sharon Perrella, The University of Western Australia</i>          |
|           | Transition Home. Outcomes and Follow-up. <i>Gemma Willey, Barwon Health &amp; St John of God Hospital, Geelong</i>                  |
| 4.45 pm   | Close   |

[REGISTER HERE](#) or Scan the QR Code

|                   | ACNN Member Price | Non-Member Price |
|-------------------|-------------------|------------------|
| Thursday (½ day)  | \$55.00           | \$77.00          |
| Friday (full day) | \$104.50          | \$126.50         |
| Both days         | \$159.50          | \$203.50         |

